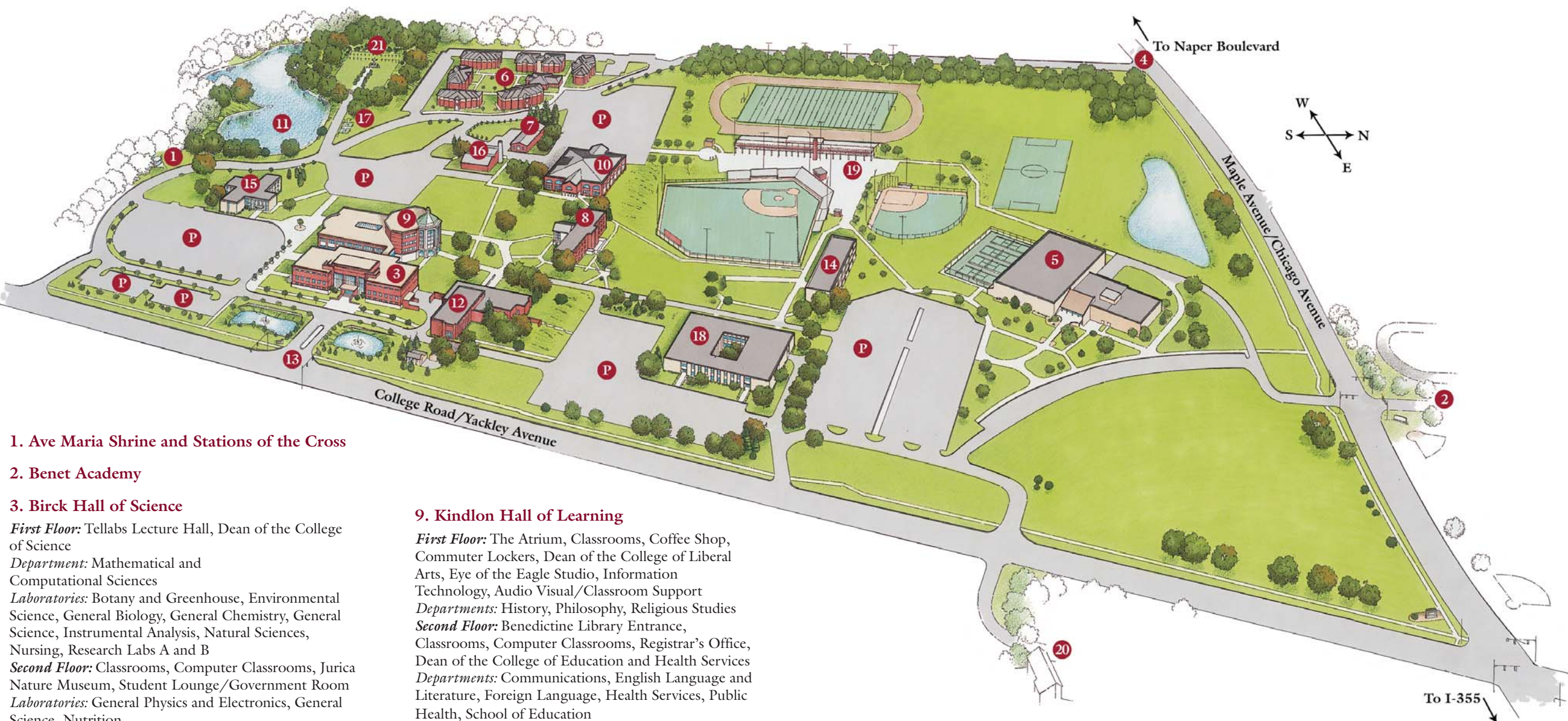


LISLE CAMPUS MAP



1. Ave Maria Shrine and Stations of the Cross

2. Benet Academy

3. Birck Hall of Science

First Floor: Tellabs Lecture Hall, Dean of the College of Science

Department: Mathematical and Computational Sciences

Laboratories: Botany and Greenhouse, Environmental Science, General Biology, General Chemistry, General Science, Instrumental Analysis, Natural Sciences, Nursing, Research Labs A and B

Second Floor: Classrooms, Computer Classrooms, Jurica Nature Museum, Student Lounge/Government Room

Laboratories: General Physics and Electronics, General Science, Nutrition

Third Floor: Cold Room, Tissue Culture Room

Departments and Programs: Biochemistry and Molecular Biology, Biological Sciences, Chemistry, Clinical Exercise Physiology, Physics and Engineering, Science Content and Process, Pre-Professional Health

Laboratories: Anatomy, Biochemistry, Biomechanics, Cell Biology, Genetics, Instrumental Analysis, Microbiology, Organic Chemistry, Physical Chemistry, Physiology, Research Labs C-I, Research Techniques, Senior Physics

4. Campus Delivery Entrance

5. Dan and Ada Rice Center

Basketball Arena, Classrooms, Coaches Office, Indoor Track, Racquetball/Tennis Courts, Trophy Room, Volleyball Arena

6. Founders' Woods Apartments

7. Grounds Shop Garage

8. Jaeger Residence Hall

9. Kindlon Hall of Learning

First Floor: The Atrium, Classrooms, Coffee Shop, Commuter Lockers, Dean of the College of Liberal Arts, Eye of the Eagle Studio, Information Technology, Audio Visual/Classroom Support

Departments: History, Philosophy, Religious Studies

Second Floor: Benedictine Library Entrance, Classrooms, Computer Classrooms, Registrar's Office, Dean of the College of Education and Health Services

Departments: Communications, English Language and Literature, Foreign Language, Health Services, Public Health, School of Education

10. Krasa Student Center

Art Gallery, Benedictine Central Express (registration/financial aid/student accounts), Bookstore, Career Development, Dean of Students, Dining Room, Health Services/Counseling, International Center, Mail and Copy Center, Meeting and Seminar Rooms, Moser Fireside Lounge, Presentation Room, Police, Switchboard, Residence Life, St. Benedict Chapel, Student Activities, Student Life, Student Success Center, University Ministry

11. Lake St. Benedict

12. Lownik Hall

Enrollment Center, Admissions, Auxiliary Enterprises, Benedictine Fund, Business and Finance, Campus Services, Community Development, Financial Aid, Information Technology, Marketing and Communications, New Student Advising Center, Operations, Personnel Resources, Registration, Research and Development, Student Accounts

13. Main Entrance

14. Neuzil Residence Hall

15. Ondrak Residence Hall

16. Coal Ben and Powerhouse

17. Jurica Tallgrass Prairie

18. Scholl Hall

First Floor: Administrative Suite, Alumni Relations Classrooms, Dean of the College of Business, Faculty Offices, University Development, University Events

Departments: Business and Management, Computer Science, Fine and Performing Arts, Information Systems, Management and Organizational Behavior, Organization Development

Second Floor: Computer Lab, Classrooms

Departments: Anthropology, Business Administration, Clinical Psychology, Economics, International Business, Political Science, Psychology/Sociology

19. The Village of Lisle – Benedictine University Sports Complex

20. St. Procopius Abbey

21. St. Procopius Abbey Cemetery

P Parking

Directions to the Lisle campus:



Location

Benedictine University is located at the corner of Maple Avenue (55th St.) and College Road, which is called Yackley Avenue north of Maple and Wehrli south of 75th Street. The campus is about two miles west of I-355 and one mile south of Route 34 (Ogden Avenue).

From Chicago

Take I-294 or I-290 to I-88. Go west on I-88 to I-355 south. Take the Maple Avenue exit west (right turn) for about two miles. The campus is on the left side.

From the north or south suburbs

Take the I-355 North-South Tollway to the Maple Avenue exit. The University is about two miles west of the Tollway.

From the south

Take I-55 to the I-355 exit. Take the Maple Avenue exit west to the University.

By train

Metra, the Chicago area commuter rail system, runs from Lisle to downtown Chicago and back seven days a week. For train schedules, call (630) 968-3916 or visit www.metra.com. Cab service is available for the two-mile trip from the station to campus.

By airplane

Benedictine University is about 30 minutes southwest of O'Hare International Airport. Take I-294 south to I-88. Go west on I-88 to I-355 south. Go south to the Maple Avenue exit and west to the University.

Benedictine University is 30 minutes west of Midway Airport. Take I-55 south to the I-355 exit. Go north to the Maple Avenue exit and west to the University.

Limousine service is also available.

Directions to the Moser Center in Naperville from Benedictine's campus in Lisle:

Follow College Road north to Maple Avenue. Turn left onto Maple Avenue. Turn right onto Naper Boulevard. Turn left onto East Diehl Road. Turn right onto Centre Point Circle when you see the burgundy Benedictine University sign on the corner. Turn right into the office complex and then an immediate left into the parking lot for Suite 102.

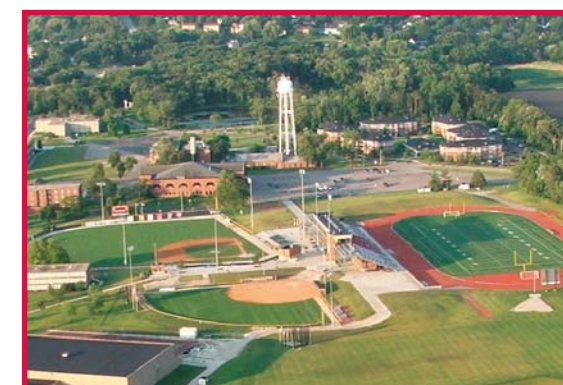
NCAA ATHLETICS

Benedictine's Intercollegiate Athletic Program is proud to compete at the NCAA Division III level as a member of the Northern Athletics Conference. The philosophy of Benedictine athletics revolves around the firm belief that "winners graduate." The "student" in student-athlete is always the highest priority.

The Village of Lisle-Benedictine University Sports Complex features a lighted multi-purpose football/soccer stadium with a nine-lane track, and lighted baseball and softball fields.

Men's varsity athletics include baseball, basketball, cross country, football, golf, soccer, and track and field.

Women's varsity athletics include basketball, cross country, soccer, softball, tennis, track and field and volleyball.



Village of Lisle – Benedictine University
Sports Complex