

**Benedictine University  
Nutrition (DPD) Program: RD Exam Pass Rate (1986-2006)**

**Outcomes of the Benedictine University Nutrition Program (Didactic Program in Dietetics):**

We **exceed** the Commission on Accreditation for Dietetics Education (CADE) of the American Dietetic Association (ADA) benchmark of an average Registered Dietitian (RD) exam pass rate of  $\geq$  80%. During the past 8 years, our students **exceeded** the national average 1<sup>st</sup> time RD exam pass rate by **nearly 10%**.

**100% of Benedictine University Nutrition Program graduates who took the RD exam passed it!**

Year	Benedictine University: Number taking exam	Benedictine University: Number passing exam	Benedictine University: 1 <sup>st</sup> time pass rate	National: Internship 1 <sup>st</sup> time pass rate	National: 1 <sup>st</sup> time pass rate
Nutrition Program launched in 1982. Registered Dietitians taught as Adjunct faculty beginning 1984-1985.					
1986	1	1	100%		
1987	1	1	100%		
1988	3	1	33%		60.6%
1989	3	1	33%		73.2%
1990	2	1	50%		70.2%
1 <sup>st</sup> Full-time Registered Dietitian hired by Benedictine University in fall 1990 for Nutrition Program Additional adjunct faculty still needed (taught courses of expertise)					
1991	2	2	100%		82.8%
1992	2	2	100%		(Oct) 89%
1993	3	2	67%		87.6%
1994	2	2	100%		87.1%
1995	5	5	100%		(Oct) 89%
1996	1	1	100%		(Oct) 90%
1997	5	3	60%		84.2%
Dietetic Internship Director (Registered Dietitian) hired (half-time) in 1997 for graduate program.					
1998	3	3	100%		87.5%
Registered Dietitian hired (half-time) by Benedictine University in fall 1998 for undergraduate Nutrition Program. Position advanced to full-time the next year. Due to sabbatical and grant releases, average FTE was 1.75 during next 8 years. Adjunct faculty still needed (taught courses of expertise)					
1999	3	3	100%		87.9%
2000	8	8	100%	88%	86%
2001	5	5	100%	86%	84%
2002	7	7	100%	84.6%	81.7%
2003	3	1	33%	79%	79.4%
2004	1	1	100%	79.7%	78.4%
2005	8	7	87.5%	81.5%	80%
2006	2	2	100%	85%	85%
4 <sup>th</sup> Registered Dietitian hired (full-time) to serve both undergraduate and graduate nutrition programs in 2006. Adjunct faculty still needed (to teach courses of expertise) as programs continue to grow in size.					
<b>1986-2006</b>	<b>70</b>	<b>59</b>	<b>21 year: 84.2%</b>		
<b>1991-2006</b>	<b>60</b>	<b>54</b>	<b>16 year: 90%</b>		
<b>1999-2006</b>	<b>37</b>	<b>34</b>	<b>8 year: 91.9%</b>		
<b>2004-2006</b>	<b>10</b>	<b>11</b>	<b>3 year: 90.9%</b>		
<b>2006</b>	<b>2</b>	<b>2</b>	<b>1 year: 100%</b>		

Since the hiring of the first full-time registered dietitian to support the program 16 years ago, our students have achieved a Registered Dietitian examination pass rate of 100% in 12 of the 16 years, or 75% of the time, with an average pass rate of 90%! The 2006 1<sup>st</sup> time RD pass rate for our students was 100%.

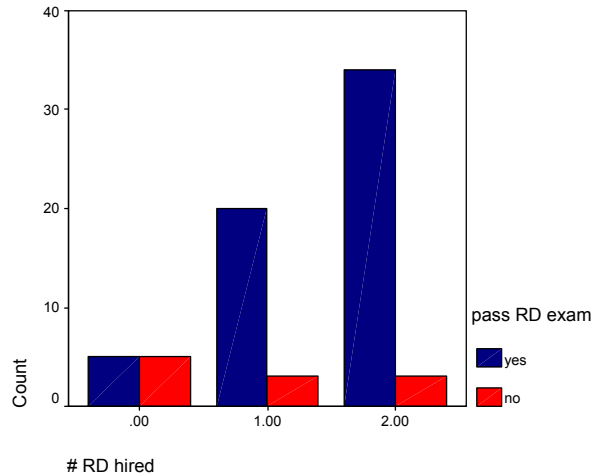
The repeater pass rate success of students who did not pass the pass the examination for Registered Dietitians (RD) the first time was also explored. Most years (75%) The Benedictine University Nutrition Program reported a 1<sup>st</sup> time repeater pass rate of 100%. Our long-term (21-year) mean 1<sup>st</sup> time repeater pass rate is 72.7%, exceeding the national 1<sup>st</sup> time repeater mean pass rate of 46.1% for the corresponding years (Refer to the table below). Of the three students who did not pass on the 1<sup>st</sup> repeat – all students did pass the exam upon further testing and become Registered Dietitians.

Year	Benedictine University: Number taking exam	Benedictine University: Number passing exam	Benedictine University: 1 <sup>st</sup> time repeater pass rate	National: 1 <sup>st</sup> time repeater pass rate
1986	0	0		
1987	0	0		
1988	1	1	100%	<i>n/a</i>
1989	1	1	100%	42%
1990	2	2	100%	40%
1991	1	1	100%	46%
1992	0	0		
1993	0	0		
1994	1	1	100%	51.9%
1995	0	0		
1996	0	0		
1997	0	0		
1998	2	1	50%	46.4%
1999	0	0		
2000	0	0		
2001	0	0		
2002	0	0		
2003	2	0	0%	53.9%
2004	0	0		
2005	1	1	100%	46.6%
2006	0	0		
<b>1986-2006</b>	<b>11</b>	<b>8</b>	<b>21 year: 72.7%</b>	46.1%

### Impact of Number of Dedicated Faculty:

Because the pass rate increased with the addition of faculty hired to the program, the 1986 through 2006 RD pass rate scores were analyzed further. A large statistically significant difference was found ( $\chi^2(2)=10.354, p = .001, \eta = .385$ ) for the years 1986-1990 (no RD) versus 1991-2006 (1 or 1.75 RD) (Refer to the figure right).

The average RD examination pass rate increased from 50% (1986-1990) to 90% (1991-2006) with the hiring of faculty for the Nutrition Program.



Although there clearly was an increase in the number of students who passed the RD exam in the past 8 years (with 1.75 RD), the results were not statistically different than the results of the previous 8 years. However, if we consider that (a) the average RD score for the program increased from 87% (1991-1998) to 92% (1999-2006), and (b) the students increased from slightly above average (~1%) to nearly 10% above the national average, the *addition of the second department member for the program* appears to have made a positive quality contribution to the program

**Plans:**

- Maintain the Benedictine University Nutrition Program pass rates above the national average.
- Continue to regularly examine the student learning experience and curriculum, making improvements as needed to reflect professional trends, CDR reports, student learning needs and wants, and improve learning assessment tools.

*Report compiled August 3, 2007 (C. Arnold)*