

Benedictine University

Fall 2009

Fact Booklet

Student Headcount [source: IPEDS]

Students by Program	Fall 98	Fall 99	Fall 00	Fall 01	Fall 02	Fall 03	Fall 04	Fall 05	Fall 06	Fall 07	Fall 08	Fall 09
Undergraduate Students	1750	1795	2007	1986	2044	2114	2148	2320	2657	2993	3282	3355
Graduate Students	950	827	835	714	765	854	1084	1080	1267	1580	1997	2481
Total	2700	2622	2842	2700	2809	2968	3232	3400	3924	4573	5279	5836

Student Headcount [source: IPEDS]

Students by Load	Fall 98	Fall 99	Fall 00	Fall 01	Fall 02	Fall 03	Fall 04	Fall 05	Fall 06	Fall 07	Fall 08	Fall 09
Undergraduate Students												
Full-time*	1279	1305	1411	1363	1417	1472	1481	1518	1692	1958	2161	2262
Part-time	471	490	596	623	627	642	667	802	965	1035	1121	1093
Total	1750	1795	2007	1986	2044	2114	2148	2320	2657	2993	3282	3355

*A full-time undergraduate student is enrolled for 12 or more credit hours in the term.

Graduate Students												
Full-time**	219	159	223	141	164	177	247	250	275	511	597	716
Part-time	731	668	612	573	601	677	837	830	992	1069	1400	1765
Total	950	827	835	714	765	854	1084	1080	1267	1580	1997	2481

**A full-time graduate student is enrolled for 9 or more credit hours in the term.

Student Headcount [source: IPEDS]

Students by Degree Status	Fall 98	Fall 99	Fall 00	Fall 01	Fall 02	Fall 03	Fall 04	Fall 05	Fall 06	Fall 07	Fall 08	Fall 09
Associates Degree Seeking	NA	22	178	184	170	118	148	176	257	208	228	234
Bachelor's Degree Seeking	1532	1617	1688	1716	1772	1892	1906	2037	2325	2675	2957	2990
Master's Degree Seeking*	NA	NA	636	511	512	554	827	954	1100	1317	1710	2216
Doctoral Degree Seeking	42	25	53	18	50	24	46	23	54	38	81	77

*Prior to Fall 2000, all Master's students were treated as degree seeking in IPEDS reports.

Student Headcount/Credit Hours Generated [source: IPEDS]

Student Classification	Fall 02	Fall 03	Fall 04	Fall 05	Fall 06	Fall 07	Fall 08	Fall 09	Fall 02	Fall 03	Fall 04	Fall 05	Fall 06	Fall 07	Fall 08	Fall 09
Doctoral																
Quarter	50	24	46	23	40	25	81	38	600	336	552	322	500	241	837	352
Semester	NA	NA	NA	NA	14	13	0	39	NA	NA	NA	NA	81	117	0	288
Masters																
Quarter	496	516	589	632	858	1018	1259	1464	3390	3619	4368	4410	6626	8077	9980	11495
Semester	219	314	449	425	355	524	657	940	1030	1630	2502	2709	1548	3181	3977	5908
Undergraduate	2044	2114	2148	2320	2657	2993	3282	3355	25353	26333	26719	27793	31716	36390	39635	40916
Total	2809	2968	3232	3400	3924	4573	5279	5836	30373	31918	34141	35234	40471	48006	54429	58959

Student Headcount [source: IPEDS]

Students by Gender	Fall 98	Fall 99	Fall 00	Fall 01	Fall 02	Fall 03	Fall 04	Fall 05	Fall 06	Fall 07	Fall 08	Fall 09
Undergraduate Students												
Female	984	1034	1192	1230	1234	1323	1339	1388	1523	1701	1883	1923
Male	766	761	815	756	810	791	809	932	1134	1292	1399	1432
Total	1750	1795	2007	1986	2044	2114	2148	2320	2657	2993	3282	3355
Graduate Students												
Female	616	535	525	439	476	599	743	705	764	1059	1363	1747
Male	334	292	310	275	289	255	341	375	503	521	634	734
Total	950	827	835	714	765	854	1084	1080	1267	1580	1997	2481

Student Headcount Percent [source: IPEDS]

Students by Ethnicity*	Fall 98	Fall 99	Fall 00	Fall 01	Fall 02	Fall 03	Fall 04	Fall 05	Fall 06	Fall 07	Fall 08	Fall 09
Undergraduate Students												
American Indian/Native Amer	0.3	0.4	0.1	0.2	0.2	0	0.2	0.3	0.2	0.2	0.3	0.2
Asian/Pacific Islander	12.5	13.5	12.0	13.7	12.8	13.0	12.9	13.6	13.0	12.3	13.4	14.4
Black/Non-Hispanic	6.1	6.2	7.9	8.9	9.3	10.2	9.1	9.8	10.1	10.0	10.1	9.7
Hispanic	6.4	6.9	7.0	7.7	7.6	7.6	7.3	7.1	5.8	5.7	6.4	7.3
White/Non-Hispanic	61.5	60.7	52.9	49.4	49.7	47.6	51.0	42.4	37.4	34.7	35.3	34.9
Not Reported	13.2	12.2	20.1	20.1	20.5	21.5	21.2	26.8	33.5	37.0	34.5	33.6
Graduate Students												
American Indian/Native Amer	0	0.7	0.1	0.1	0	0	0.1	0.1	0.2	0.2	0.3	0.3
Asian/Pacific Islander	5.3	6.5	7.4	8.5	5.9	4.7	3.6	4.8	5.1	5.3	5.5	4.6
Black/Non-Hispanic	2.8	2.7	3.1	3.9	3.4	4.7	5.2	4.4	7.4	9.6	9.6	11.7
Hispanic	1.1	1.7	2.3	2.0	2.0	2.4	2.3	3.4	4.3	3.8	4.4	4.2
White/Non-Hispanic	63.4	60.5	57.8	56.7	43.5	44.7	42.5	47.3	46.5	45.4	48.8	50.8
Not Reported	27.3	27.9	29.2	28.7	45.0	43.4	46.3	40.0	36.6	35.7	31.4	28.4

*Excludes Non-Resident Alien Students and students in the China program; Percents are rounded to nearest tenth so may not add up to 100%

Student Headcount [source: IPEDS]

Students by Age*	Fall 98	Fall 99	Fall 00	Fall 01	Fall 02	Fall 03	Fall 04	Fall 05	Fall 06	Fall 07	Fall 08	Fall 09
Undergraduate Students												
under 25	1305	1372	1389	1372	1421	1482	1496	1584	1690	1853	2012	2117
25 and over	445	423	618	593	612	607	620	709	947	1116	1256	1214
Graduate Students												
under 30	342	317	280	268	243	289	390	444	484	602	802	933
30 and over	608	510	555	388	477	516	625	589	746	936	1165	1516

*Not all student ages are reported

Student Headcount [source: IPEDS]

Most Popular Primary Majors/Degree Programs

	Undergraduate Majors –Bachelors									
	Fall 00	Fall 01	Fall 02	Fall 03*	Fall 04	Fall 05	Fall 06	Fall 07	Fall 08	Fall 09
#1	Biology	Biology	Biology	Biology	Biology	Biology	Management[BA]	Management[BA]	Management[BA]	Management[BA]
#2	Psychology	Psychology	Psychology	Management[BA]	Health Science	Psychology	Health Science	Health Science	Health Science	Health Science
#3	Comp Science	Elementary Ed	Business & Econ	Psychology	Psychology	Health Science	Biology	Biology	Biology	Psychology
#4	Elementary Ed	Business & Econ	Health Science	Business & Econ	Management[BA]	Management[BA]	Psychology	Psychology	Psychology	Biology
#5	Business & Econ	Health Science	Management[BA]	Health Science	Business & Econ	Elementary Ed	Elementary Ed	Elementary Ed	Mgt&OrgBehav	Mgt&OrgBehav

*In 2003, Management [BA] and Psychology tied as the 2nd most popular primary major

	Graduate Programs – Masters									
	Fall 00	Fall 01	Fall 02	Fall 03*	Fall 04	Fall 05	Fall 06	Fall 07	Fall 08	Fall 09
#1	MBA	MBA	MBA	MBA	MBA	MBA	MBA	MBA	MBA	MBA
#2	MPH	MPH	MPH	MEd	MEd	MEd	MEd	MEd	MEd	MEd
#3	MEd	MEd	MEd	MAEd	MAEd	MAEd	MOB	MPH	MPH	MPH

University Wide Information Student Geographic Profile	Fall 00	Fall 01	Fall 02	Fall 03	Fall 04	Fall 05	Fall 06	Fall 07	Fall 08	Fall 09
Number of States Represented	22	26	28	25	23	31	41	44	47	49
Percent Students from Illinois	94%	93%	94%	96%	96%	95%	94%	91%	89%	85%
Number of Foreign Countries Represented	12	10	7	11	9	9	14	16	17	16
Number of Non-Resident Aliens	NA	NA	53	86	52	42	45	64	91	92

Undergraduate Class Information	Fall 00	Fall 01	Fall 02	Fall 03	Fall 04	Fall 05	Fall 06	Fall 07	Fall 08	Fall 09
Percent Class Sections in the Range 10 to 29 students enrolled	59%	63%	68%	66%	66%	70%	67%	66%	68%	68%
Percent Class Sections in the Range 30 to 39 students enrolled	15%	8%	10%	11%	11%	13%	12%	14%	17%	14%
Percent Class Sections with 40 or more students enrolled	3%	4%	4%	3%	2%	2%	3%	4%	2%	2%

Six Year Graduation Rate for First-time Bachelors Degree-seeking Undergraduates

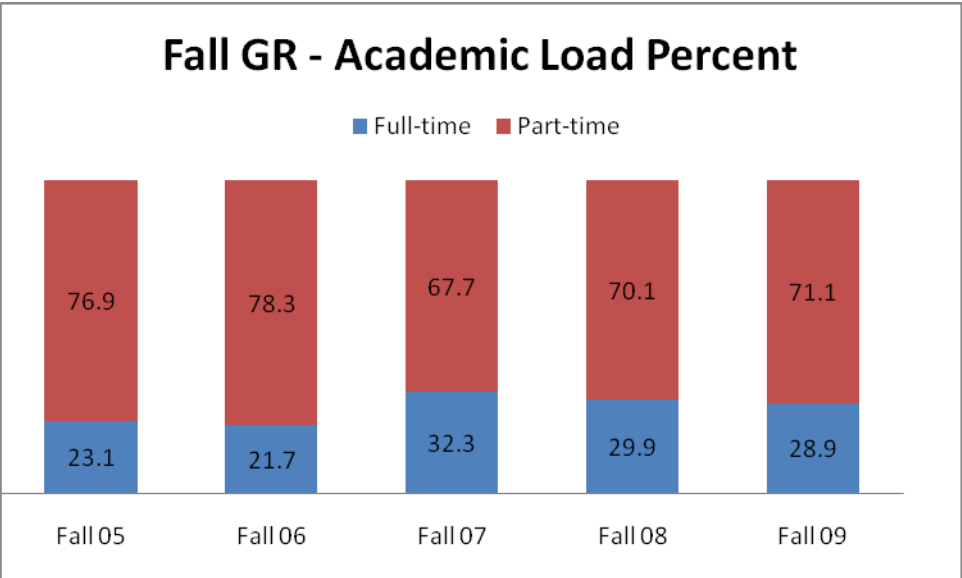
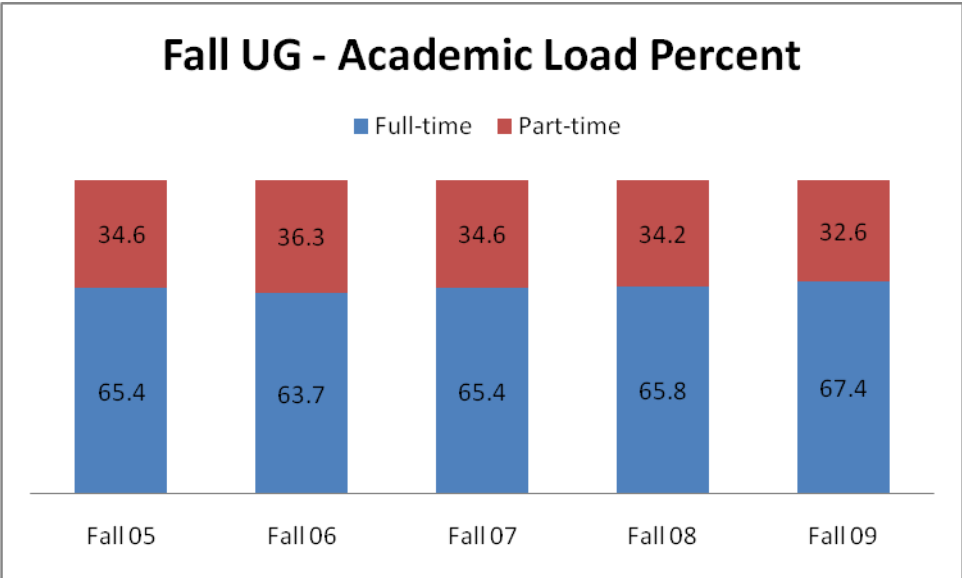
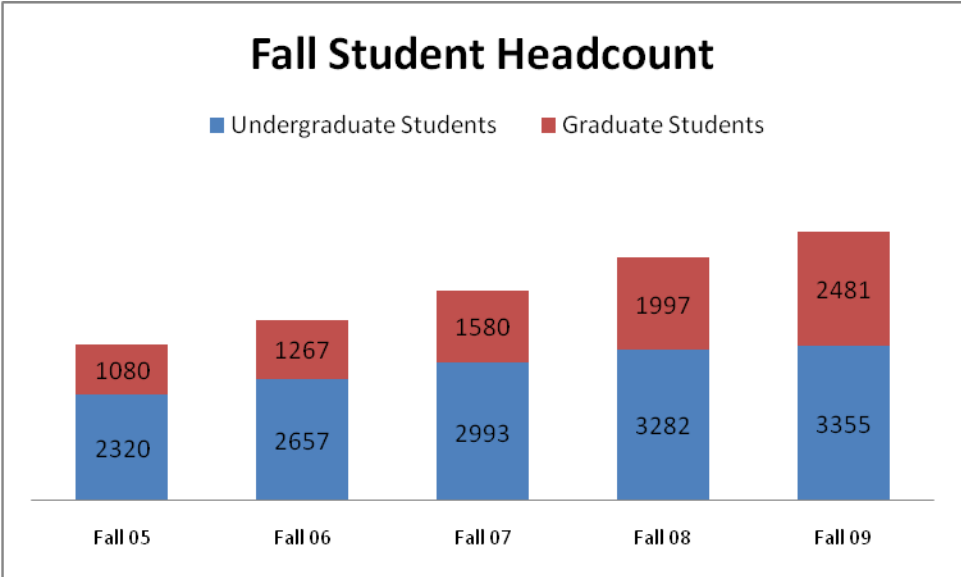
Term of Entry	Graduation Rate
Fall 1992	62%
Fall 1993	57%
Fall 1994	58%
Fall 1995	58%
Fall 1996	53%
Fall 1997	53%
Fall 1998	51%
Fall 1999	51%
Fall 2000	54%
Fall 2001	60%

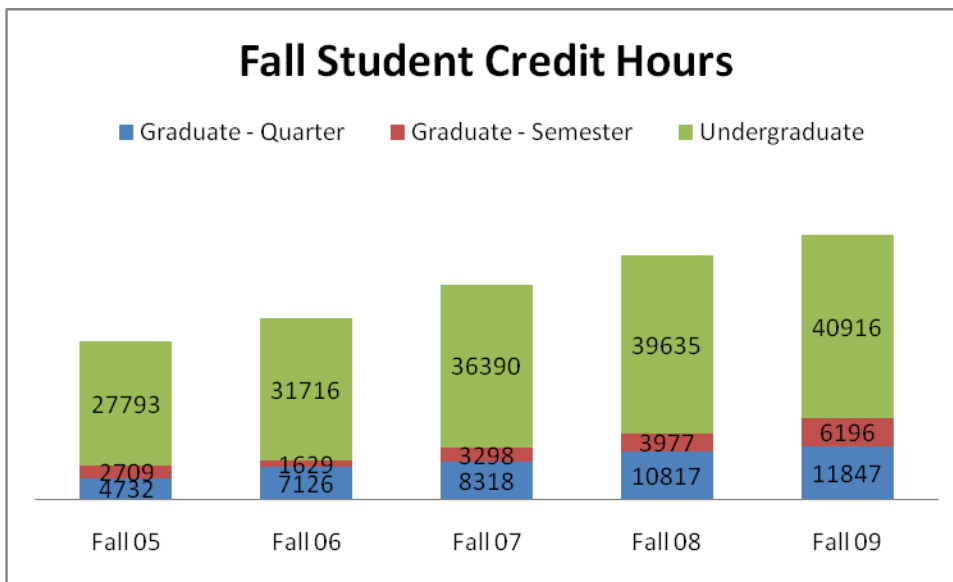
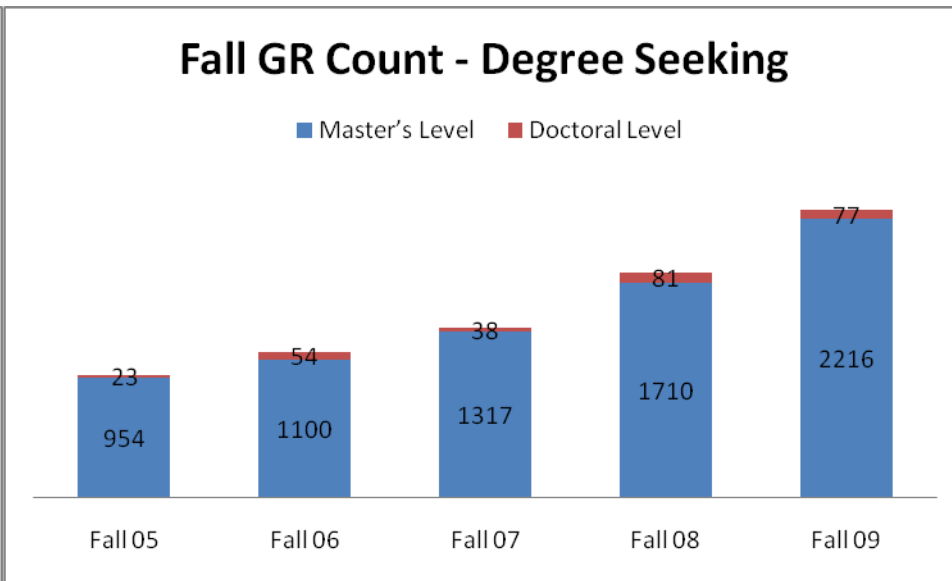
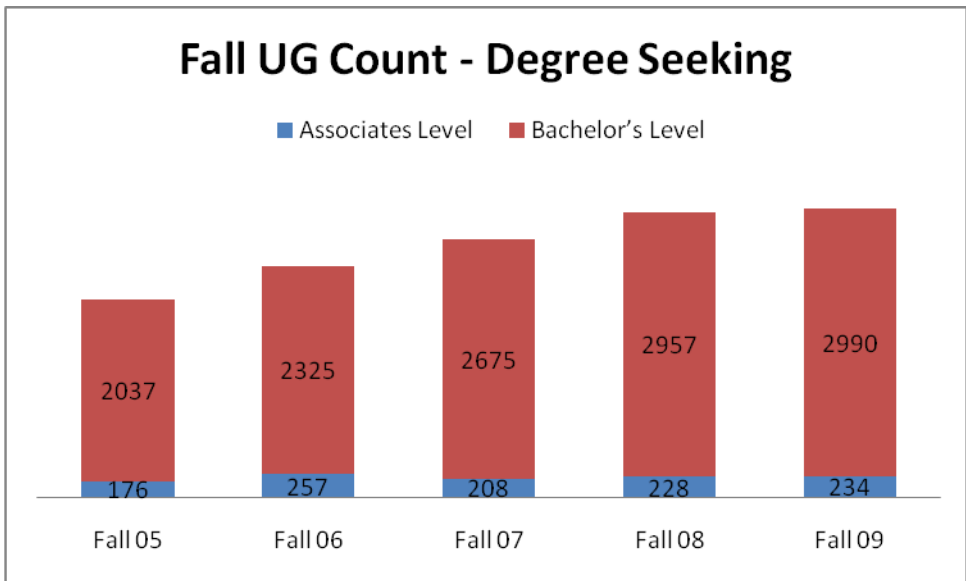
Freshman to Sophomore Year Retention Rates for First-time Bachelors Degree-seeking Undergraduates

Term of Entry	Retention Rate
Fall 1997	78%
Fall 1998	75%
Fall 1999	78%
Fall 2000	77%
Fall 2001	76%
Fall 2002	77%
Fall 2003	75%
Fall 2004	76%
Fall 2005	71%
Fall 2006	80%
Fall 2007	78%
Fall 2008	74%

Statistics on Incoming First-time Bachelors Degree-seeking Undergraduates

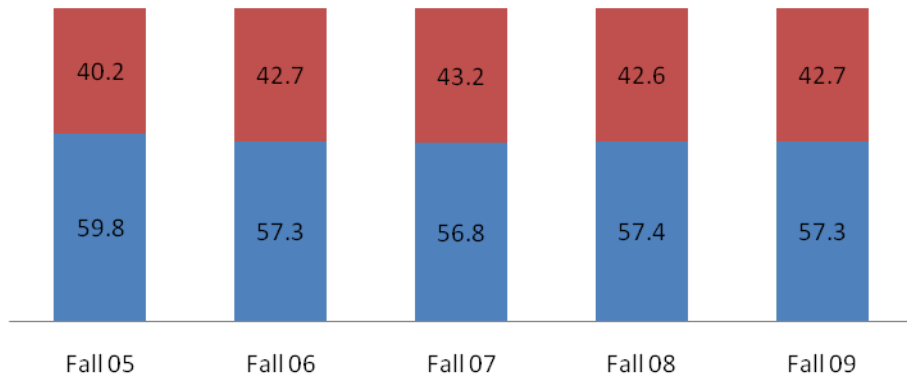
	Term of Entry											
	Fall 98	Fall 99	Fall 00	Fall 01	Fall 02	Fall 03	Fall 04	Fall 05	Fall 06	Fall 07	Fall 08	Fall 09
Class Size [source: IPEDS]	302	259	278	262	303	303	302	311	379	388	435	453
Mean ACT Composite	23	23	23	23	24	23	23	23	23	23	23	23
25 th Percentile ACT Composite	19	20	19	20	21	20	21	20	20	21	20	20
75 th Percentile ACT Composite	25	26	25	26	26	26	26	25	25	25	26	26
Percent in top 10% of high school class	11%	25%	19%	28%	25%	20%	20%	20%	19%	18%	21%	15%
Percent in top 50% of high school class	72%	85%	79%	83%	81%	75%	77%	74%	73%	75%	74%	70%





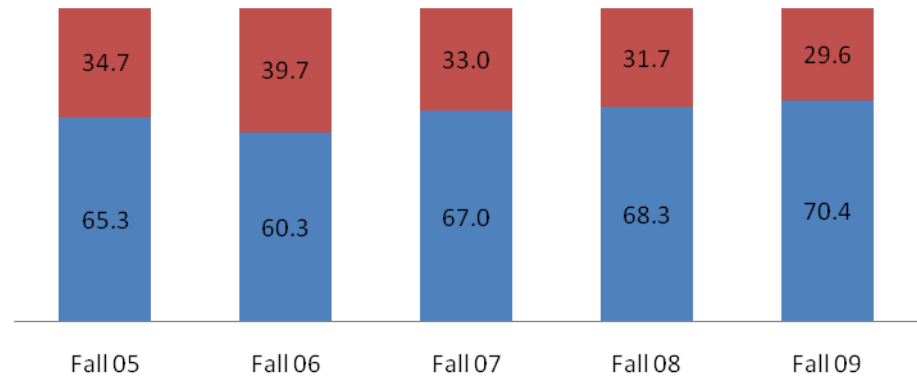
Fall UG - Gender Percent

Female Male



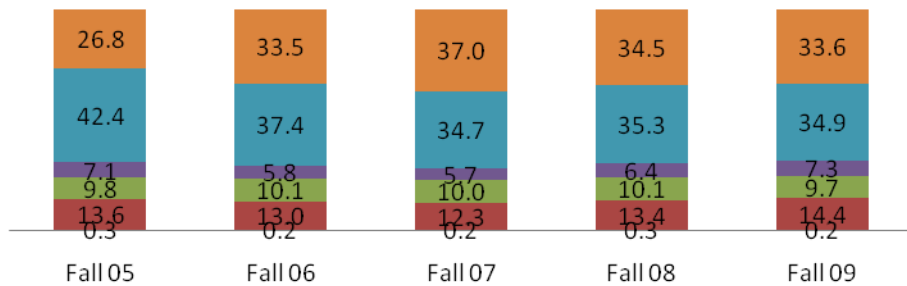
Fall GR - Gender Percent

Female Male



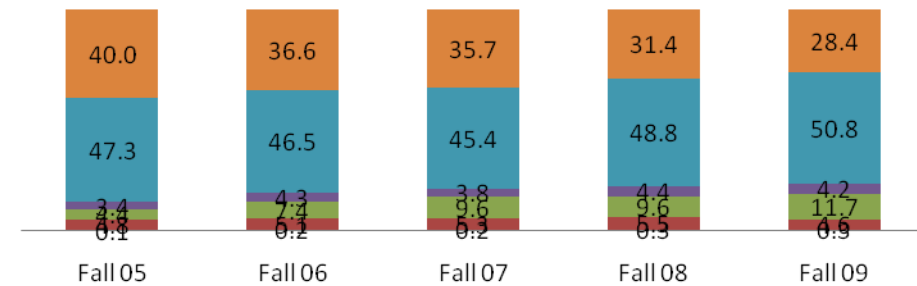
Fall UG - Ethnic Percent

American Indian/Native American Asian/Pacific Islander
 Black/Non-Hispanic Hispanic
 White/Non-Hispanic Not Reported



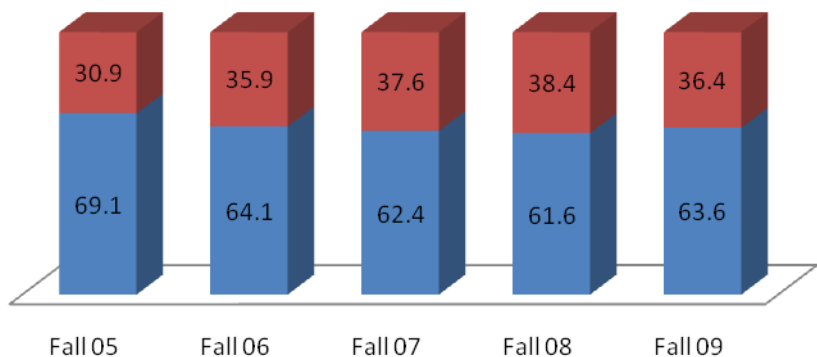
Fall GR - Ethnic Percent

American Indian/Native Amer Asian/Pacific Islander
 Black/Non-Hispanic Hispanic
 White/Non-Hispanic Not Reported



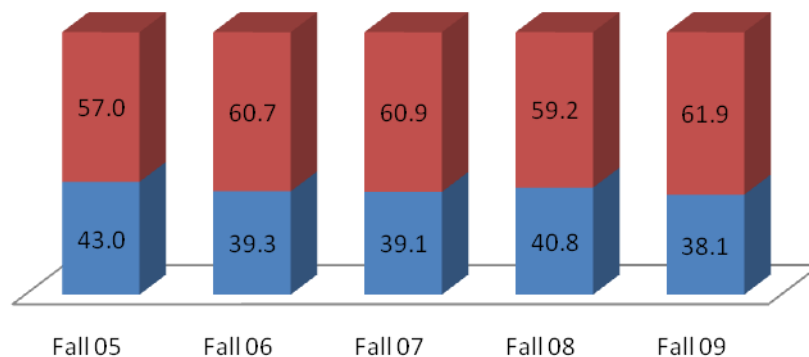
Fall UG - Age Range Percent

■ under 25 ■ 25 and over



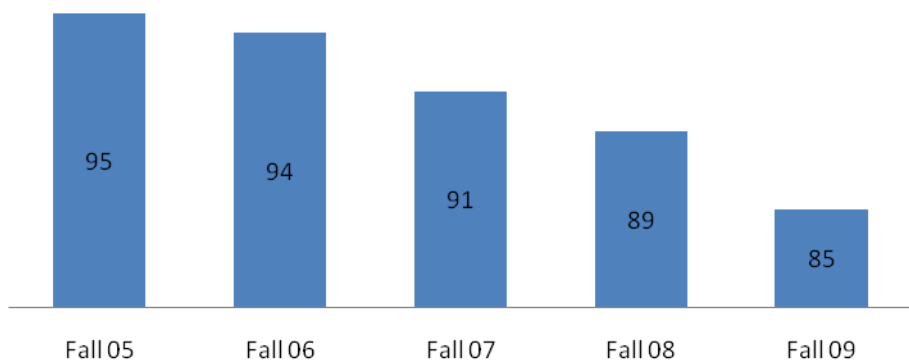
Fall GR - Age Range Percent

■ under 30 ■ 30 and over



Fall Percent - from Illinois

■ Student Percent



Fall Count - Non-Resident Alien

■ Student Headcount

